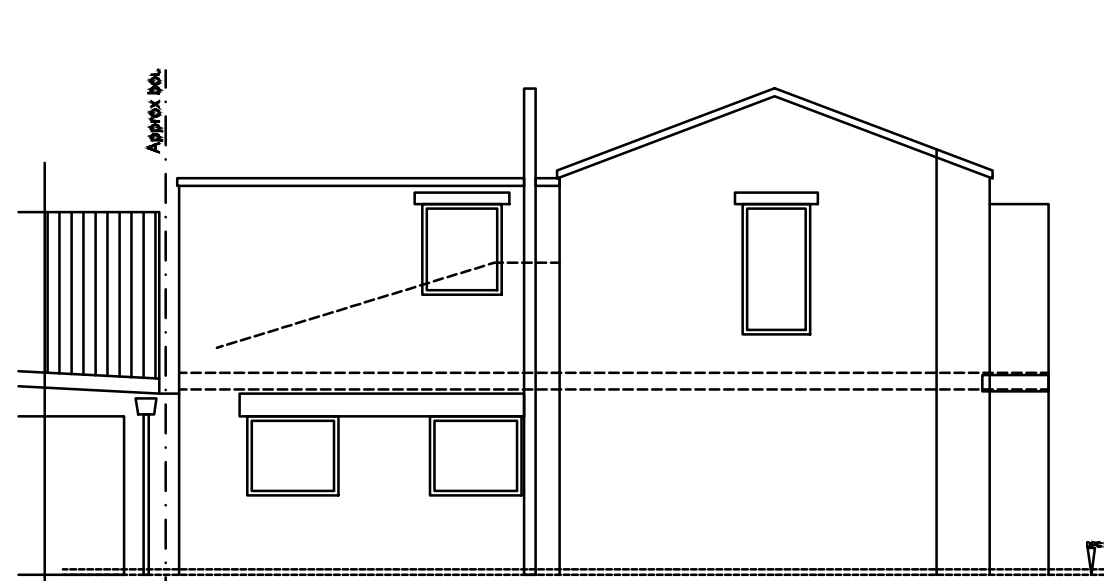
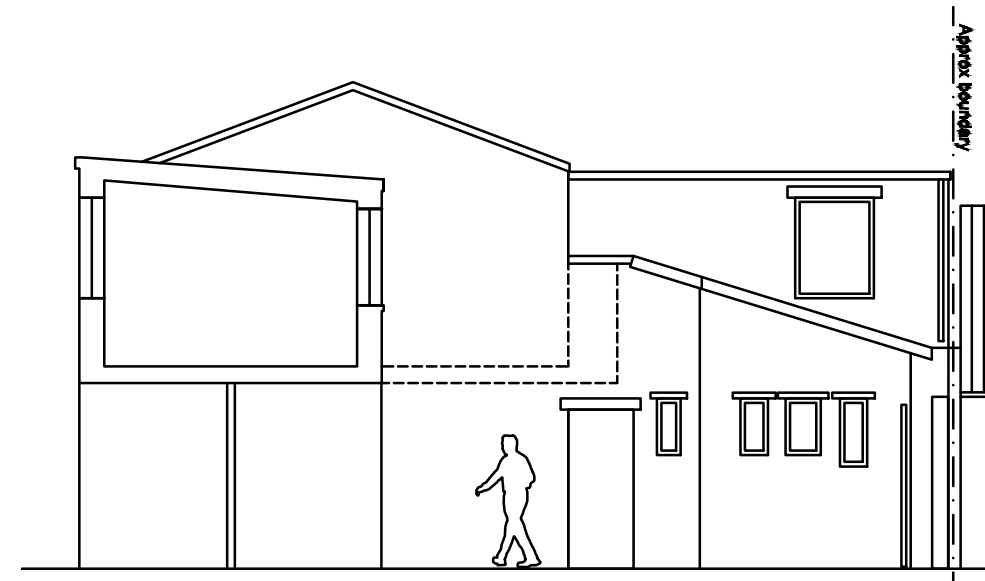


NORTH ELEVATION

GARAGE DOORS REPLACED WITH WINDOWS



EAST ELEVATION



WEST (COURTYARD) ELEVATION

Rev - : yyyy.mm.dd : Initial : Auth : Revision notes

Issue Purpose: INFORMATION

P+HS Architects

84 Albion Street Leeds West Yorkshire LS1 6AG	The Old Station Station Road Stokesley TS9 7AB	Churchill House 12 Mosley Street Newcastle upon Tyne NE1 1DE
--	---	---

0113 2454332	01642 712684	0191 230 8103
--------------	--------------	---------------

www.pandhs.co.uk



Client	Strathmore Holdings Ltd	Issued From	Newcastle
Project	Lansdowne House Refurbishment	Date	April 2017
Title	Proposed Elevations	Scale	1:100@A3
		Drawn	SC Auth DS

Drawing Number \_\_\_\_\_ Revision \_\_\_\_\_

B1732 D - 20 - 002 -

Stage Identification: Design - D Construction - C

Do not scale from this drawing. Work to figured dimensions, and any discrepancy to be reported to the Architect.  
Refer to larger scale drawings where available. © P+HS Architects Limited